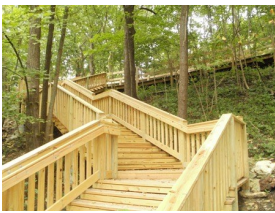
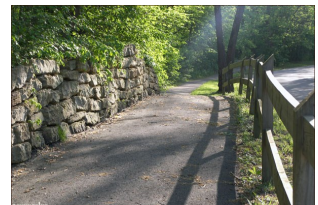
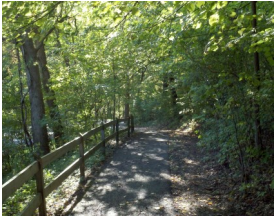
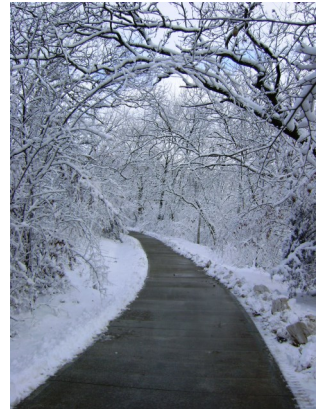





Trails System

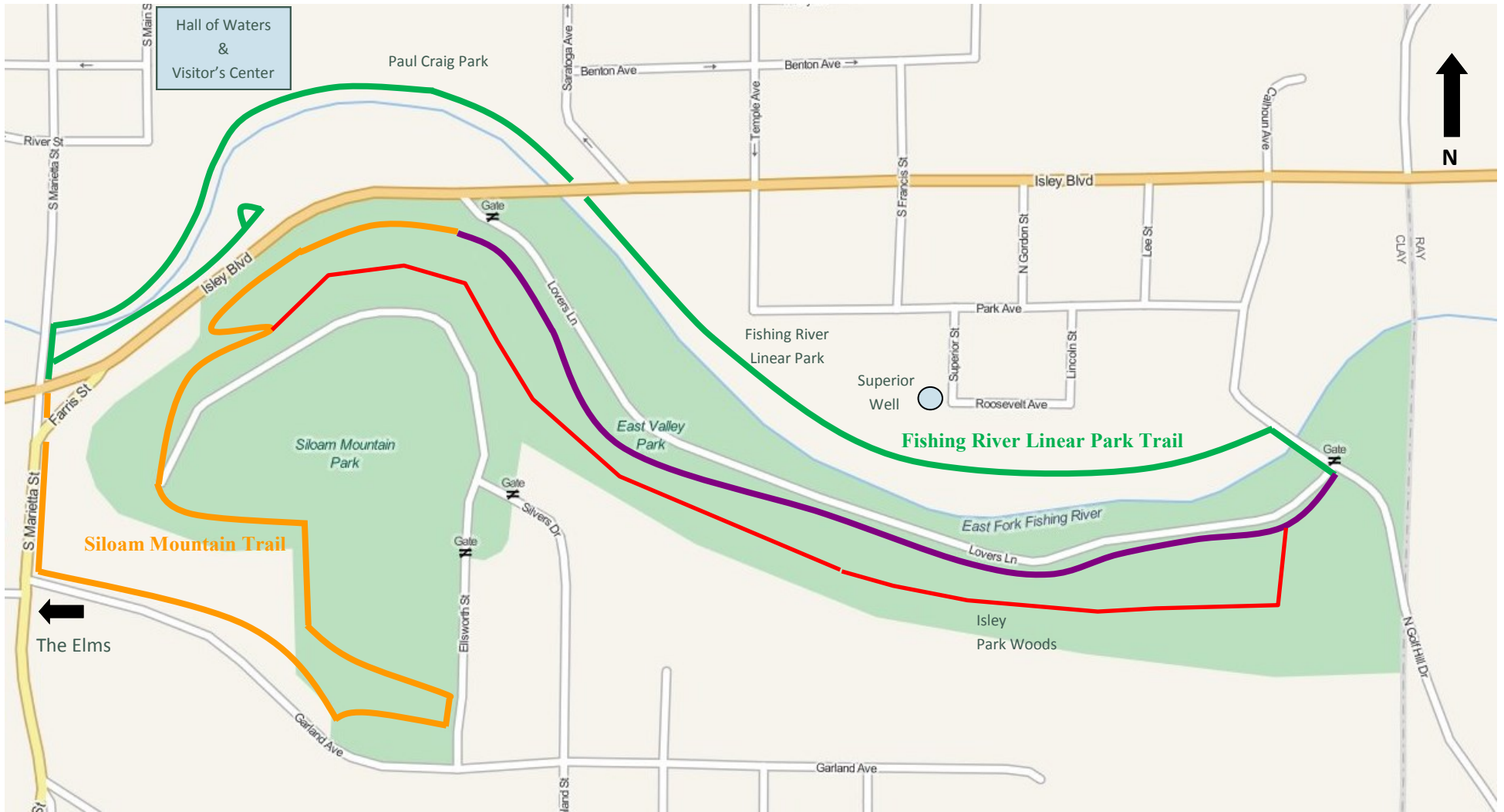


 Rainbow Trail 1.85 Miles

Rainbow Trail

The Rainbow Trail (formerly known as HWY 69 Trail) runs along HWY 69/Rainbow Blvd on the west side of Excelsior Springs. The newest addition to the trail was completed in 2013 and runs west from the HWY 69/Hospital Drive. The total trail system is approximately 1.85 miles.

Excelsior Springs Parks and Recreation
 112 South Thompson Ave, Excelsior Springs
 816-630-1040
www.esparks.org



Fishing River Linear Park Trail .7 Miles
 Isley Park Woods Trail .5 Miles
 Isley Park Dirt Trail .8 Miles
 Siloam Mountain Trail .8 Miles

Downtown Excelsior Springs Trail System

The Downtown Excelsior Springs Trail System includes three trails: Fishing River Linear Park Trail, Isley Park Woods Trail and Siloam Mountain Trail. These trails wind through five parks: Paul Craig Park, Fishing River Linear Park, Isley Park Woods, East Valley Park and Siloam Mountain Park. The entire trail is approximately 2 miles long. The historic Superior Well can be seen from the Fishing River Linear Park Trail. Numerous challenging dirt trails can be found throughout Isley Park Woods. Please enjoy our trails!

Share the Trail with Others

- Stay to the right so others can pass. Announce your presence when passing other trail users.
- Keep all pets on a leash and clean up after your pet.
- Respect adjoining landowners rights and privacy.
- Watch for hazards on or near the trail.